

ICARUS PT

PRESSURE AND TEMPERATURE



1. INTRODUCTION

ICARUS PT is a data logger used to memorize pressure and temperature. **ICARUS PT** is designed to memorize absolute pressure and temperature with optimal precision and it is suggested to test water or gas tubes

ICARUS PT is a type 1 device, realized with integrated pressure and temperature sensors.

2. TECHNICAL SPECIFICATIONS

2.1 Pressure Measurement

ICARUS PT is equipped with an external absolute pressure transducer connected to the body with a cable 3 m long. Pressure connection is a 1/4" GAS M fitting.

- Available pressure range: 0÷2,5 ; 6; 10; 30; 81; 150; 250 bar A.
- Precision on pressure: 0,1% of the full scale

2.2 Temperature Measurement

ICARUS PT is equipped with a class A 4-wire PT 1000 transducer, compliant with the European Standard EN IEC 60751 (its resistance at 0 ° C is 1000Ω). The 4 wire connection guarantees high accuracy measurement independent from cable length. The sensor is connected to the computing unit from a cable typically long 3 meters. Transducer measuring range is of -30°C÷+70°C.

2.3 Display

The display can:

- visualize pressure data in real time
- visualize temperature data in real time
- visualize/modify the setup
- visualize/modify calibration of pressure and temperature

2.4 Power

ICARUS PT may be powered with:

- internal lithium battery (3,6 V)
- external power (8 Vdc)

The internal battery, that satisfies ATEX requirement, guarantees a life autonomy of 3 years in normal user conditions.

In presence of external power, the battery works as a back-up.

WARNING: external power must satisfy ATEX requirements.

It can only be used with a battery supplied by Termics or a certified power supply.

2.5 Communication Ports

N°1 optical port for serial communication on a PT (data download, configuration setup)

2.6 Keypad

The keypad is composed by 5 buttons:

- Four buttons with arrows (Up, Down, Left, Right)
- A central confirmation button (OK)

The directional buttons Up/Down:

- scroll menu voices Up/Down.
- move display cursor from an upper/lower row.

The directional buttons Left/Right:

- access a menu page
- move display cursor Left/Right

The OK button permit to:

- select a menu voice
- confirm a parameter

3 INSTALLATION

ICARUS PT is generally installed in a classified “Zone 1” hazardous area, next to gas pipelines.

The enclosure of ICARUS PT is provided with 4 fixing threaded holes positioned at the corners. The internal diameter of the holes is 4mm.

By these holes, ICARUS can be both wall-fixed and plate-fixed using M4 screws.



TERMICS s.r.l.

Via S.Predengo 27/29 - 26022 Castelverde (CR)

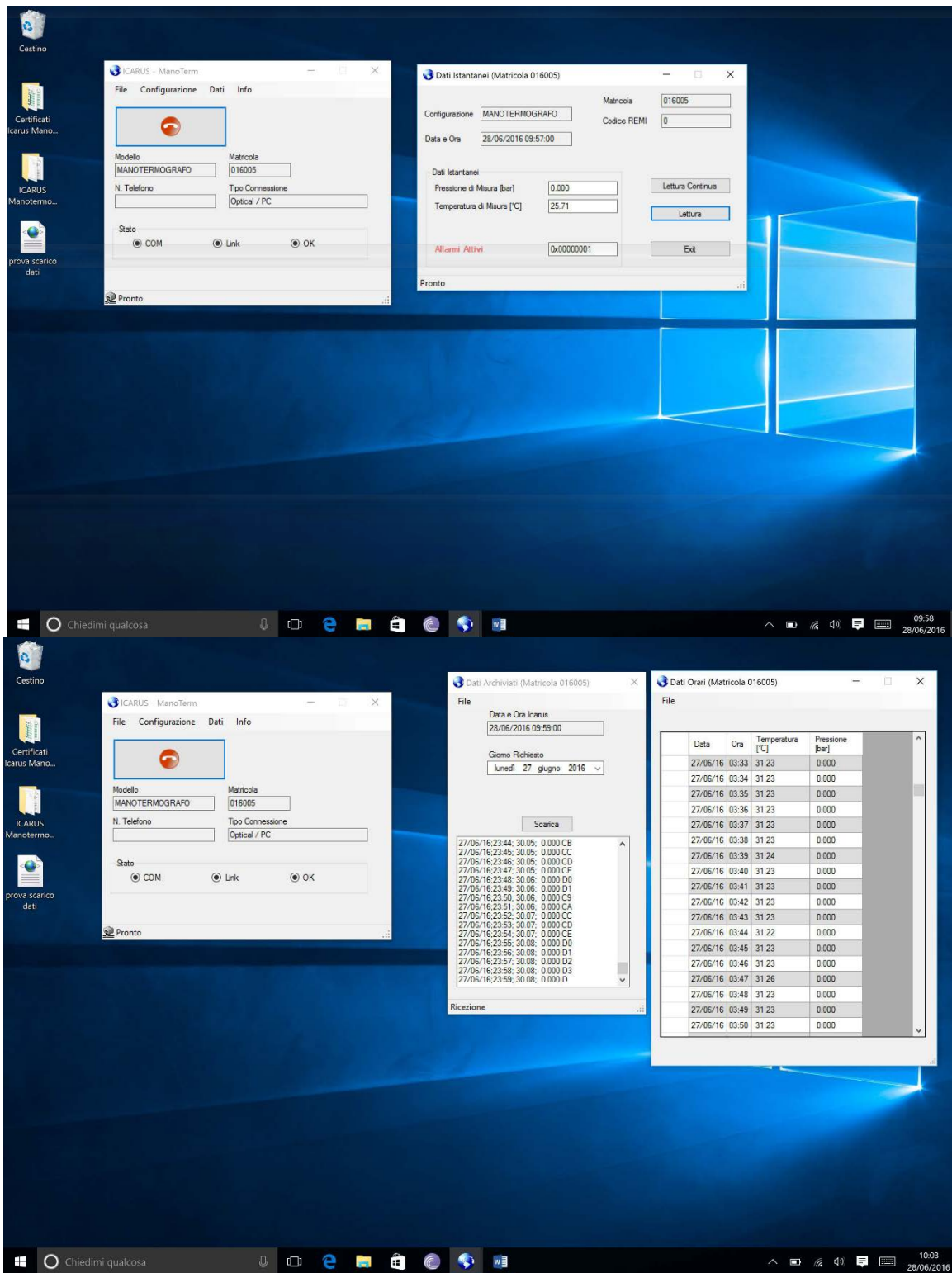
Email: termics@tecnosite.it

Website: www.termics.it



Email: info@fimigas.com

Website: www.fimigas.com



4 DATA STORAGE AND DOWNLOAD

ICARUS PT has a circular memory capable to record pressure and temperature data for 30 days. The device is supplied with a software (for Windows) for data download. Data can be exported in an Excel file.



TERMICS s.r.l.
Via S.Predengo 27/29 - 26022 Castelverde (CR)
Email: termics@tecnosite.it
Website: www.termics.it



Email: info@fimigas.com
Website: www.fimigas.com